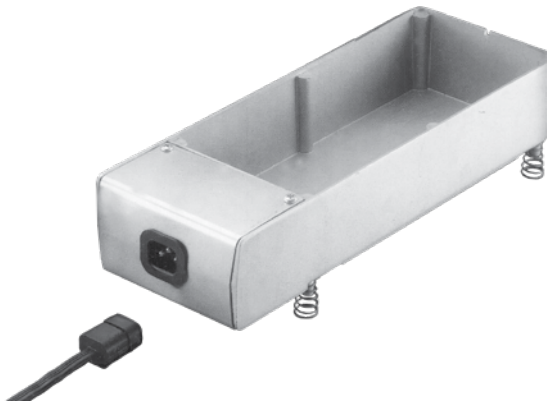




EVAPMATIC CONDENSATE EVAPORATOR INSTALLATION INSTRUCTIONS



MODEL NO.	WATTAGE	VOLTAGE	SIZE	EVAP. CAPACITY
T12-0370	160	117	50 OZ. (1500 ml)	3 OZ (120-150 ml)/HR
T12-0372		220		
T12-0372-CE		220		
T12-5000	300	117		5.75 OZ (210-240 ml)/HR
T12-5200		220		
T12-5200-CE	254	220		

These values also apply to the -P Models

The above evaporation rates are calculated assuming the installation of the product is done according to these installation instructions; Standard Atmospheric conditions at mean sea level and 50% RH apply.

WARRANTY:

Component Hardware inspects and tests every evaporator to assure our customer that it is in perfect working order when it leaves our factory. If the evaporator does not perform satisfactorily when first received, it may be returned to our facility (postage or freight prepaid).

A replacement or credit will be issued when the cause of complaint has been found and such replacement or credit is determined by Component Hardware to be justified.

When scaling is found on the exterior of the product the warranty is void.

THIS IS THE SOLE WARRANTY OF ANY KIND REGARDING THE CONDENSATE EVAPORATOR. IT IS IN LIEU OF ANY OTHER WARRANTY, EXPRESSED OR IMPLIED, INCLUDING ANY WARRANTY OF MERCHANTABILITY, OF FITNESS FOR A PARTICULAR PURPOSE, OR ANY OTHER MATTER, AND WILL NOT APPLY IF THE CONDENSATE EVAPORATOR HAS BEEN DAMAGED DUE TO IMPROPER INSTALLATION, USE OR ALTERATION, OR IF THE INSTRUCTIONS IN THIS DOCUMENT HAVE NOT BEEN FOLLOWED.

CAUTION

INSPECT CONTENTS IMMEDIATELY AND FILE A CLAIM WITH DELIVERING CARRIER FOR ANY DAMAGE.

SAVE YOUR BOX AND ALL PACKING MATERIALS.

YOU ARE RESPONSIBLE FOR DAMAGE TO YOUR UNIT IF RETURNED IMPROPERLY PACKED.

CAUTION:

Follow these instructions in the installation and use of the condensate evaporator.

Step 1

Evaporators are intended to be used solely as components of other equipment and to be factory installed by original equipment manufacturers to whom they are sold. As such they are incomplete in construction features. It is the responsibility of the original equipment manufacturer to provide proper safeguards in their location and installation.

Step 2

All evaporators must be properly grounded.

Step 3

The evaporator must not be altered in any manner.

Step 4

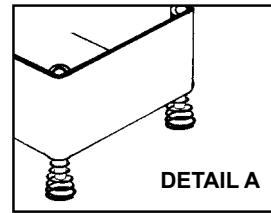
The Evaporator has been provided with a pull-out type plug that is easily removed from the evaporator so the evaporator may be cleaned. The evaporator should be cleaned and or descaled regularly to maximize efficiency. Disconnect evaporator from power supply before removing cord set from evaporator.

Step 5

Do not permit evaporators to be operated on wet surfaces.

Step 6

For all models except T12-0370-P120, the enclosed springs must be installed on the evaporator legs (See Detail A).



Step 7

DO NOT REST EVAPORATOR ON ANY WOOD SURFACE OR NEAR FLAMMABLE MATERIAL.

Step 8

Equipment containing evaporators should be installed in adequately ventilated compartments to allow moisture-laden air to be carried off.

Step 9

Each evaporator is marked with its voltage rating. Use a separate electrical line connected to a fuse block or circuit breaker of proper capacity. Voltage drops will decrease operating efficiency and voltage surges will damage the heating elements.

Step 10

The enclosure cover of the evaporator should not be removed or any components tampered with.

Step 11

Never flood the evaporator. When max capacity is reached in normal operation, install additional evaporating capacity (037X models 3 OZ (120-150 ml)/HR or 5X00 models 5.75 OZ (210-240 ml)/HR)