

PROJECT NAME: _____

LOCATION: _____

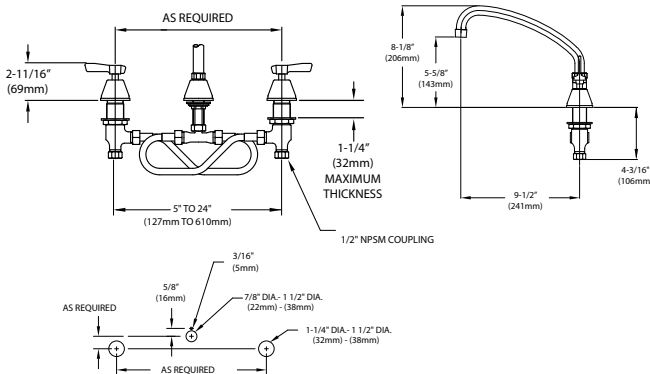
SPECIFIER ITEM NO. _____ **QTY:** _____

ENCORE PART NO. _____

Encore[®] Deck Mount Widespread Faucet
 with 9-1/2" Swivel Curved Tubular Spout
 and Lever Handles

KL84-8x09-SE1 Series

KL84-8109-SE1 Ceramic Valves
 KL84-8009-SE1 Compression Valves



Dimensions shown in inches (mm) are for reference only
 and are subject to change.

1/2" NPSM Male Inlets with Compression Fittings
 Operating Temperature: 40-180°F (5-83°C)
 Operating Pressure: 15-125psi
 1-1/8" (29mm) holes for deck are recommended to
 accommodate 1/2" supply nipple.

Approximate shipping weight - 8 lbs
 Warranty - 2 years parts

Solid heavy duty cast body is specification and commercial quality

Commercial Quality Features

- Swivel curved tubular swing spout design
- ADA-compliant lever handles
- Built-in check valve to prevent cross-flow and back-flow

SPECIFICATIONS:

Deck Mount Faucet to be Encore KL84 Series in the following configuration:

____ KL84-8109-SE1 Ceramic Valves
 ____ KL84-8009-SE1 Compression Valves

Faucet body to be constructed of polished chrome plated brass. Faucet to have 5"-24" adjustable inlet centers with lever handles. Valves to be 1/4-turn with integral check valve to prevent cross-flow and back-flow. Spout to be swivel curved tubular style. Color coded temperature indexes shall meet international standards. 2.2gpm aerator @ 60psi standard with full flow stream bubbler screen spout tip.

COMPLIES WITH:
 THE FEDERAL "REDUCTION OF LEAD
 IN DRINKING WATER ACT" -
 2011 - US SENATE BILL NO. S.3874
 NSF/ANSI 61/9, ANNEX G

